



MEK Kinase-6 Polyclonal Antibody

Catalog No	YP-Ab-14834
Isotype	IgG
Reactivity	Human;Mouse
Applications	IHC;IF;ELISA
Gene Name	MAP3K6
Protein Name	Mitogen-activated protein kinase kinase kinase 6
Immunogen	The antiserum was produced against synthesized peptide derived from human MAP3K6. AA range:281-330
Specificity	MEK Kinase-6 Polyclonal Antibody detects endogenous levels of MEK Kinase-6 protein.
Formulation	Liquid in PBS containing 50% glycerol, 0.5% BSA and 0.02% sodium azide.
Source	Polyclonal, Rabbit,IgG
Purification	The antibody was affinity-purified from rabbit antiserum by affinity-chromatography using epitope-specific immunogen.
Dilution	IHC: 1/100 - 1/300. ELISA: 1/5000.. IF 1:50-200
Concentration	1 mg/ml
Purity	≥90%
Storage Stability	-20°C/1 year
Synonyms	MAP3K6; ASK2; MAPKKK6; MEKK6; Mitogen-activated protein kinase kinase kinase 6; Apoptosis signal-regulating kinase 2
Observed Band	
Cell Pathway	intracellular,
Tissue Specificity	Brain,PCR rescued clones,Skin,
Function	catalytic activity:ATP + a protein = ADP + a phosphoprotein.,cofactor:Magnesium.,enzyme regulation:Activated by phosphorylation on Thr-806. Catalytically active only when complexed with MAP3K5, with MAP3K5 supporting the stability and the active configuration of MAP3K6 and MAP3K6 activating MAP3K5 by direct phosphorylation.,function:Component of a protein kinase signal transduction cascade. Activates the JNK, but not ERK or p38 kinase pathways.,similarity:Belongs to the protein kinase superfamily.,similarity:Belongs to the protein kinase superfamily. STE Ser/Thr protein kinase family. MAP kinase kinase kinase subfamily.,similarity:Contains 1 protein kinase domain.,subunit:Bounds both upstream activators and downstream substrates in multimolecular complexes.,



Background

This gene encodes a serine/threonine protein kinase that forms a component of protein kinase-mediated signal transduction cascades. The encoded kinase participates in the regulation of vascular endothelial growth factor (VEGF) expression. Alternative splicing results in multiple transcript variants. [provided by RefSeq, Jul 2014],

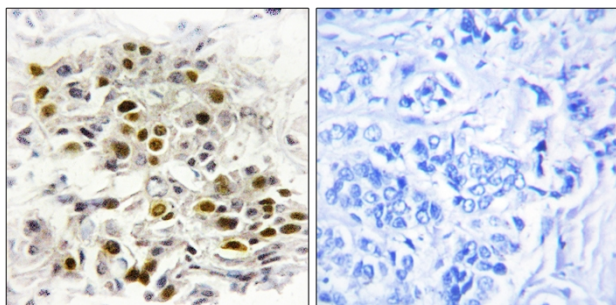
matters needing attention

Avoid repeated freezing and thawing!

Usage suggestions

This product can be used in immunological reaction related experiments. For more information, please consult technical personnel.

Products Images



Immunohistochemistry analysis of paraffin-embedded human breast carcinoma tissue, using MAP3K6 Antibody. The picture on the right is blocked with the synthesized peptide.